

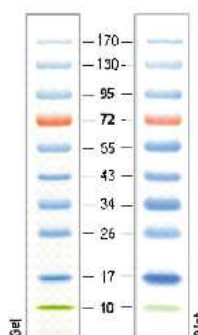


Product Datasheet

Product Name Color Protein Marker, Red Blue Green (10-170kDa)
Cata No CB800004

Description

The Prestained Protein Ladder is a mixture of 10 recombinant, highly purified colored proteins with apparent molecular weights of 10 kDa to 170 kDa. Ladder proteins are covalently coupled with a blue dye except for two reference bands prestained with different colors. The 72 kDa reference band is orange and 10 kDa reference band is green. The ladder is supplied in gel loading buffer and is ready-to-use: no heating, further dilution or addition of a reducing agent is required.



Form

Approximately 0.2 mg/ml of each protein in the storage buffer (62.5 mM Tris-H₃PO₄ (pH 7.5 at 25°C), 1 mM EDTA, 2% (w/v) SDS, 10 mM DTT, 1 mM NaN₃ and 33% (v/v) glycerol).

Applications

Monitoring of protein separation during SDS-PAGE
Verifying Western transfer efficiency
Approximate sizing of proteins on SDS-polyacrylamide gels and Western blots.

Storage

stable at 4°C for up to 3 months. For long term storage, store at -20°C.

Note

Thaw the ladder at room temperature for a few minutes to dissolve precipitated solids. **DO NOT BOIL!**

Mix gently, but thoroughly, to ensure the solution is homogeneous. Load the following volumes of the ladder on an SDS-polyacrylamide gel:

- 5 µl per well for mini gel,
- 10 µl per well for large gel.

Use the same volumes for Western blotting. After the run is complete, stain the gel or perform Western transfer procedure as desired.

*** For Non-Clinical Research Use Only ***